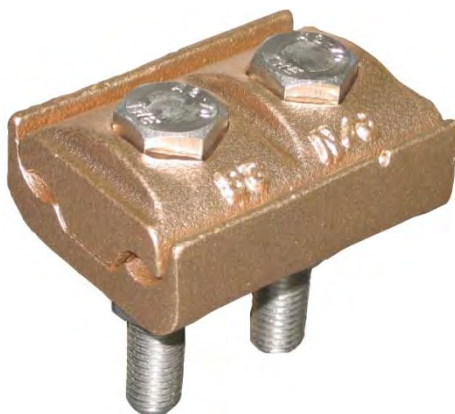


PART 8 – EARTHING & LIGHTNING PROTECTION

EARTH ROD CLAMPS



CT03/11



DCTO25



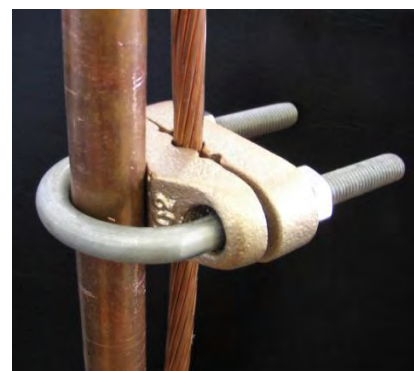
REF15



REC35/120



REB12



EC2

Catalogue No.	Description	Weight (kg)
CTO3	CTO3/11 Single Bolt PG Clamp for joining copper Conductor 10 - 70 mm ²	0.12
DCTO3	DCTO3/11 Double Bolt PG Clamp for joining Copper Conductor 10 - 70mm ²	0.24
DCTO25	DCTO25 Clamp 35-150mm ² Conductor to 6mm Flat Surface (2-Bolt/2 Conductor)	0.78
ECS1525L	Earthing Clamp Single Bolt for Conductor 35-150mm ² / 7.65mm-15.75mm	0.65
REB-12	REB121070 Clamp suit 12mm diameter Rod (10-70mm ² Cable) Made from dezincified Brass and fitted with Brass Screw	0.1
REB-15	REB151050 Clamp suit 14mm & 15mm diameter Rod (10-50mm ² Cable) Made from dezincified Brass and fitted with Brass Screw	0.1
REC-25	REC-25 Clamp suit 25mm diameter Pipe (16-120mm ²)	0.3
REC35-120	REC35-120 Clamp to suit 12, 14 and 15mm diameter Earth Rod (35-120mm ² Cable) Clamp can be inverted to accommodate 16mm ² Cable.	0.15
REF-12	REF12 Clamp suits 12mm diameter Earth Rod. Allows connection of Braid or Busbar either Parallel or at Right angles to Earth Rod.	0.2
REF-15	REF15 Clamp suits 15mm diameter Earth Rod. Allows connection of Braid or Busbar either Parallel or at Right Angles to Earth Rod.	0.2

All Castings* made from High Copper Content Alloy. U-Bolts, Nuts and Spring Washers are manufactured from G304 Stainless Steel. The REC35-120 is designed with copper extrusion to hold both the Earth Rod and Cable captive. * The REB12 and REB15 are manufactured from dezincified Brass and fitted with a Brass Screw.

EARTHING CLAMPS



REX16-120



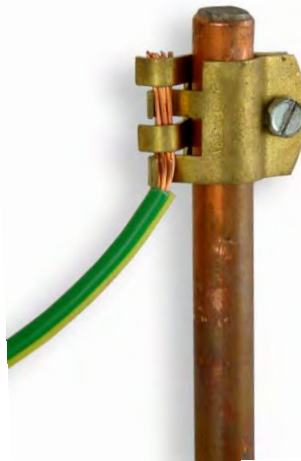
REP16-120/2



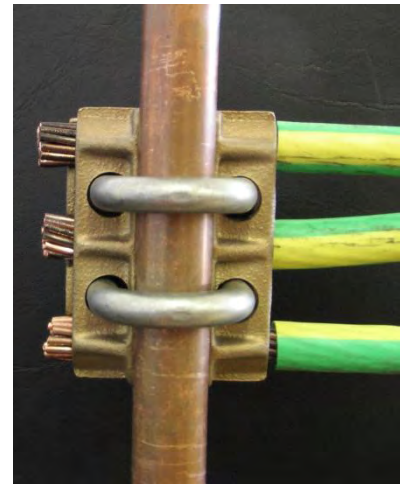
REP16-120



SCTO25



12D- 1



RET25-120/3

Catalogue No.	Description	Weight (kg)
REC35-120	REC35-120 Clamp to suit 12, 14 and 15mm diameter Earth Rod (35-120mm ² Cable) Clamp can be inverted to accommodate 16mm ² Cable.	0.15
REP16	REP16-120 Clamp suits 19mm diameter Earth Rod. (16-120mm ² Cable)	0.22
REP16-120/2	REP16-120/2 Clamp suits 19mm diameter Earth Rod (16 -120mm ² Cable) Two Cables in Parallel	0.4
RET	RET25-120/3 Clamp suits 15mm and 19mm Diameter Earth Rods Three Cables in Parallel (25-120mm ² Cable)	0.7
REW	REW4816-120 Clamp suits 48mm OD 40mm NB Pipe (16-120mm ² Cable)	0.5
REW48-16/185	REW4816-185 Clamp suits 48mm OD 40mm NB Pipe (16-185mm ² Cable)	0.53
REX	REX16-120 Clamp suits 12mm, 14mm, 15mm & 19mm diameter Earth (16-120mm ² Cable)	0.26
SCTO25	SCTO25 Clamp 35-150mm ² Conductor to 6mm Flat Surface, Single Bolt - Two Cables	0.4
12D1	12D-1 Brass Clip suits 12mm diameter Earth Rod	0.02

All Castings made from High Copper Content Alloy. U-bolts, Nuts and Spring Washers are manufactured from G304 Stainless Steel. The 12D-1 Brass Clip complies with AS3000:1991 and ASS1882:2002 and carries Certificate of Suitability No: CS4677N.