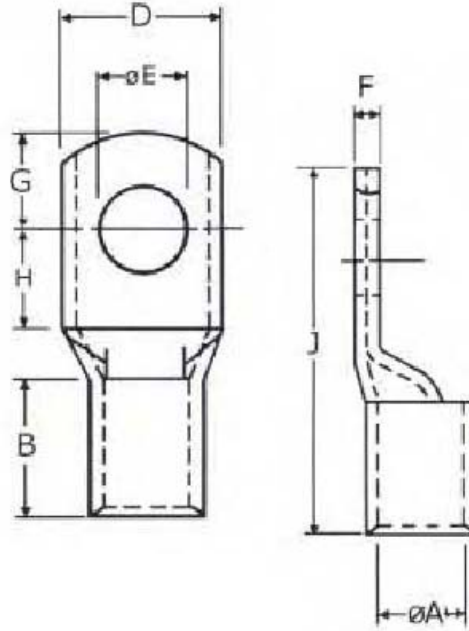


COPPER LUGS – TYPE CL (ELECTRO-TIN PLATED)



PART NO.	WIRE SIZE (sqmm)	STUD (mm)	A/F Hex Die Size	ØA	B	D	ØE	F	G	H	J
CL 1.5 - 4	1.5	4	N/A	1.8	7.5	8.0	4.2	1.0	4.0	5.0	18.5
CL 1.5 - 5	1.5	5				8.0	5.2	1.0	4.0	55.0	18.5
CL 1.5 - 6	1.5	6				10.0	6.2	0.8	5.0	6.0	20.5
CL 2.5 - 4	2.5	4		2.4	7	8.0	4.2	1.0	4.0	5.0	18.0
CL 2.5 - 5	2.5	5				10.0	5.2	0.8	5.0	6.0	20.0
CL 2.5 - 6	2.5	6				10.0	6.5	0.8	5.0	6.0	20.0
CL 2.5 - 8	2.5	8	4.4	3.8	9	11.0	8.2	0.7	6.5	8.5	24.0
CL 4 - 5	4	5				10.0	5.2	1.0	5.0	6.0	22.0
CL 4 - 6	4	6				10.0	6.2	1.0	5.0	6.0	22.0
CL 4 - 8	4	8	5.7	4.7	10	12.0	8.2	0.8	5.0	8.5	26.0
CL 4 - 10	4	10				12.0	10.2	0.8	6.5	10.5	32.0
CL 6 - 5	6	4				10.0	5.2	1.2	6.5	6.0	23.0
CL 6 - 6	6	5				12.0	6.5	1.0	5.0	9.0	27.0
CL 6 - 8	6	6	6.3	5.5	19	12.0	8.4	1.0	6.0	9.5	27.0
CL 6 - 10	6	8				16.0	10.2	0.8	5.5	11.0	32.0
CL 10 - 5	10	5				12.0	5.2	1.8	9.0	8.0	27.0
CL 10 - 6	10	6				12.0	6.5	1.8	6.0	8.0	27.0
CL 10 - 8	10	8	6.3	5.5	19	14.0	8.4	1.6	6.0	9.0	29.0
CL 10 - 10	10	10				16.0	10.5	1.4	7.0	10.5	32.0
CL 10 - 12	10	12				18.0	13.0	2.4	8.5		
CL 16 - 6	16	6	6.3	5.5	19	11.0	6.5	2.4		8.0	37.0
CL 16 - 8	16	8				14.0	8.4	1.7	6.0	9.0	39.0
CL 16 - 10	16	10				16.0	10.5	1.5	7.0	10.0	41.0
CL 16 - 12	16	12				18.0	13.0	2.4	8.0	13.0	46.0

COPPER LUGS – TYPE CL

PART NO.	WIRE SIZE (sqmm)	STUD (mm)	A/F Hex Die Size	øA	B	D	øE	F	G	H	J			
CL 25 - 6	25	6	7.7	7.1	21	13.5	6.5	2.4	10.0	9.0	41.0			
CL 25 - 8	25	8				13.5	8.4	2.4	7.0	9.0	41.0			
CL 25 - 10	25	10				16.0	10.5	1.9	7.0	10.0	44.0			
CL 25 - 12	25	12				18.0	13.0	1.6	9.0	13.0	48.0			
CL 35 - 6	35	6	8.2	8.2	21	16.0	6.5	3.0	10.0	10.0	44.0			
CL 35 - 8	35	8				16.0	8.4	3.0	8.0	10.0	44.0			
CL 35 - 10	35	10			18.0	10.5	2.6	8.0	11.0	46.0				
CL 35 - 12	35	12			22	20.0	13.0	2.2	9.0	13.0	51.0			
CL 50 - 6	50	6	10.4	9.5	22	18.0	6.5	3.3	11.0	11.0	48.0			
CL 50 - 8	50	8				18.0	8.4	3.3	9.0	11.0	48.0			
CL 50 - 10	50	10				18.0	10.5	3.3	9.0	11.0	48.0			
CL 50 - 12	50	12				21.0	13.0	2.7	9.0	13.0	52.0			
CL 70 - 6	50	6	11.5	11.2	24	21.0	6.5	3.5	11.0	13.0	54.0			
CL 70 - 8	70	8				21.0	8.4	3.5	11.0	13.0	54.0			
CL 70 - 10	70	10				21.0	10.5	3.5	11.0	13.0	54.0			
CL 70 - 12	70	12				21.0	13.0	3.5	11.0	13.0	54.0			
CL 70 - 16	70	16	11.5	11.2	24	28.0	17.0	3.5	11.0	16.0	64.0			
CL 95 - 8	95	8	14.2	13.4	27	25.0	8.4	4.0	14.0	14.0	60.0			
CL 95 - 10	95	10				25.0	10.5	4.0	12.0	14.0	60.0			
CL 95 - 12	95	12				25.0	13.0	4.0	12.0	14.0	60.0			
CL 95 - 16	95	16				25.0	17.0	3.4	12.0	16.0	64.0			
CL 120 - 8	120	8	16.5	15.6	30	28.0	8.4	5.0	14.0	14.0	64.0			
CL 120 - 10	120	10				29.5	10.5	5.0	12.0	14.0	64.0			
CL 120 - 12	12	12				29.5	13.0	5.0	12.0	14.0	64.0			
CL 120 - 16	120	16				29.5	17.0	5.0	12.0	16.0	68.0			
CL 150 - 10	150	10	18.3	16.7	30	32.0	10.5	5.8	14.0	16.0	71.0			
CL 150 - 12	150	12				32.0	13.0	5.8	16.0	21.0	80.0			
CL 150 - 16	150	16				32.0	17.0	5.8	20.0	21.0	80.0			
CL 185 - 10	185	10				20	18.4	32	34.8	10.5	5.8	20.0	16.0	71.0
CL 185 - 12	185	12	34.8	13.0	5.8				16.0	21.0	83.0			
CL 185 - 16	185	16	35.0	17.0	5.8				20.0	21.0	83.0			
CL 240 - 10	240	10	23.1	21.2	38				40.0	10.5	7.0	20.0	21.0	92.0
CL240 - 12	240	12				40.0	13.0	7.0			92.0			
CL240 - 16	240	16				40.0	17.0	7.0	21.0	21.0	92.0			
CL300 - 12	300	12				44.7	13.0	7.8	21.0	21.0	101.0			
CL300 - 16	300	16				44.7	17.0	7.8	21.0	21.0	101.0			
CL400 - X	400	X				50.0					114.0			
CL500 - X	500	X				56.0			23.0	23.0	124.0			
CL630 - X	630	X				64.4			23.0	23.0	134.0			
CL 1000 - X	1000	X				23.1	21.2	38						