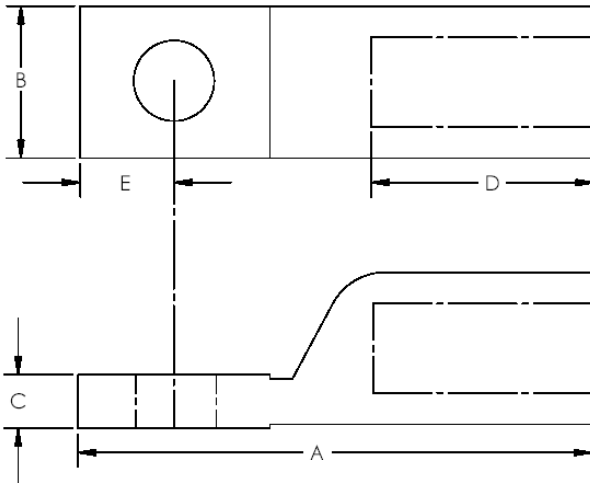


ALUMINIUM COMPRESSION LUGS – TYPE CLA

CLA40/10



CLA240L



CLA240/90-1-2-3-4
(sector lugs provided at 90° offsets)

CONDUCTOR SIZE mm	CATALOGUE No.	A	B	C	D	E	HOLE SIZE	DIE SIZE
40	CLA40/10	73	26	8	32	14	11	13.2 mm (A/F)
40	CLA40/12	73	26	8	32	14	11	13.2 mm (A/F)
120	CLA120	87	32	9	35	18	14	21.5 mm (A/F)
150	CLA150	87	37	9	41	18	14	21.5 mm (A/F)
185	CLA185	103	36	9	50	17	14	25.1 mm (A/F)
240	CLA240L	110	35	10	63	17	14	28.4mm (A/F)
630	CLA630	155	57	15	70	30	17	43.2 mm (A/F)

MATERIAL: Virgin Ingot Electrical Grade Aluminium
 Note: Cable entry hole supplied with **round or sector shape**.
 Hole partly filled with jointing compound and sealed with cap.

Enable 3D View

Enable 3D View